



PRODUCT SPECIFICATION SHEET

Part #: 5515-48

Description: QSE Deluxe 39Hi Wet Station

Standard Features:

- Two drawers
- Cabinet w/ adj. shelf
- Angled tool panel w/ holders for:
 - Blow dryer, flat iron, 2 curling irons, & clippers
- 6 outlet power strip
- Shampoo well & lift lid
- Backsplash
- 36" x 42" mirror
- Allows bowl to mount 3" higher than normal

Eight Color Choices: Black, Shaker Cherry, Cafelle, Fusion Maple, Limber Maple Wild Cherry, Brighton Walnut, Graphite Nebula



(Forty additional choices available for 10% upcharge)

Specifications:

QSE DELUXE 39Hi Wet Booth Unit w/ two drawers, cabinet w/ adjustable shelf, blow dryer holder, flat-iron holder, two curling iron holders, clipper pocket, & six-outlet power strip. Shampoo well w/ lift lid. Includes backsplash & 36" x 42" mirror. 48"W x 16"D x 39"H. Pictured w/ CB19 Shampoo Bowl, ordered separately.

Optional Features:

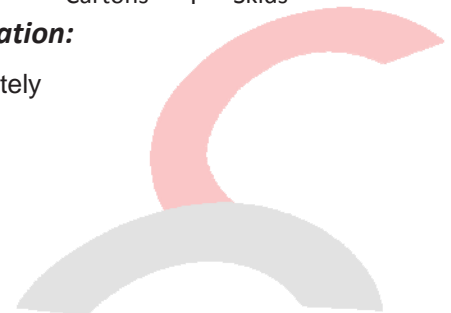
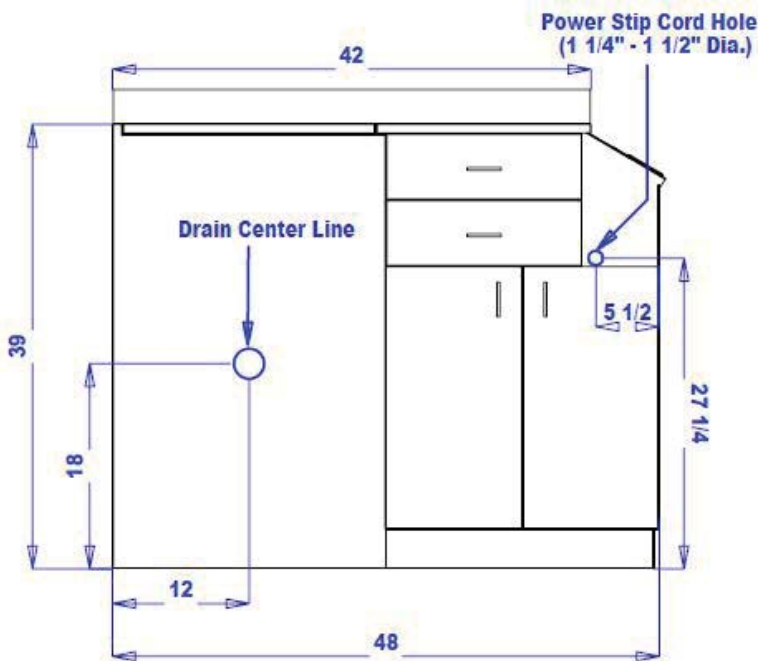
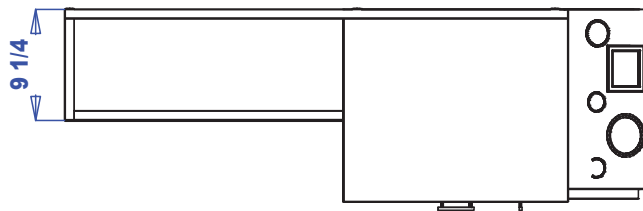
- Cam locks on doors & drawers
- Short lift lid
- Soft close lift lid / positive stop in upright position
-

Shipping and Assembly/Installation Information

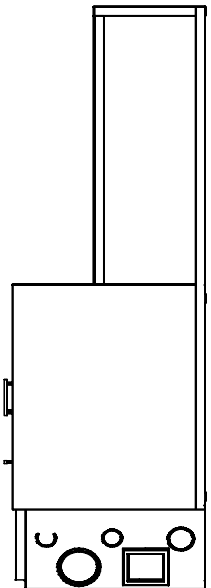
Assembly Required:	<input checked="" type="checkbox"/> Yes	<input type="checkbox"/> No
Electrical Required:	<input checked="" type="checkbox"/> Yes	<input type="checkbox"/> No
Plumbing Required:	<input checked="" type="checkbox"/> Yes	<input type="checkbox"/> No
Ship Dimensions	32 "W x 60 "D x 45 "H	
Total Ship Weight	266 LBS	
# of Ship Pieces	Cartons	1 Skids

Additional Information:

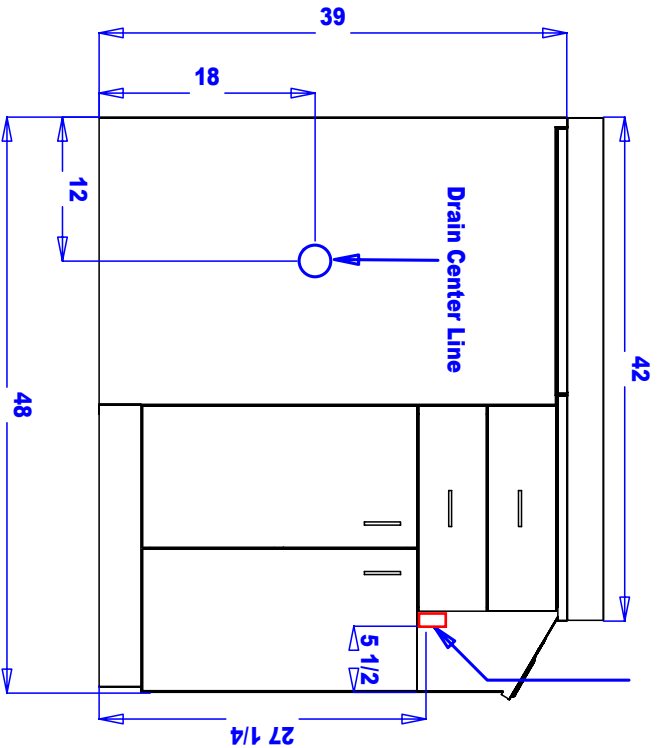
Order bowl separately



Plumbing/Electric

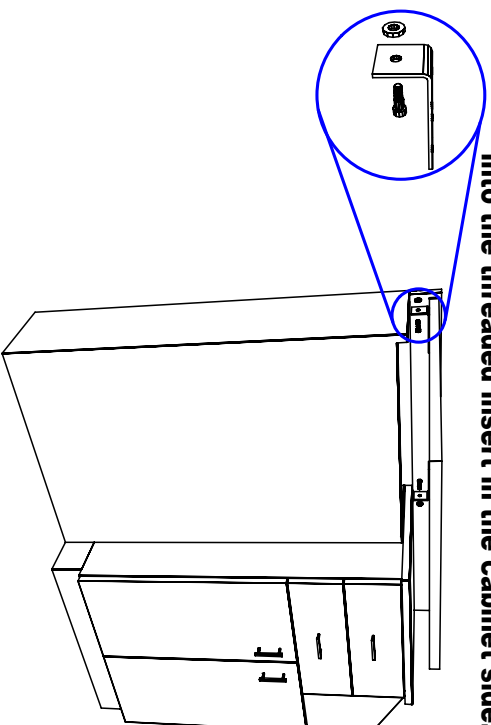


Power Strip Located here,
with access holes to cabinet & floor



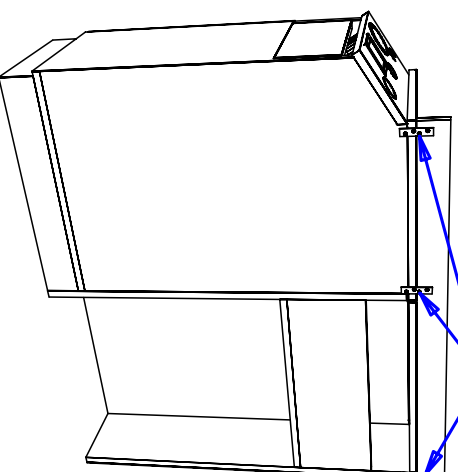
Lift Lid Installation

Lift lid should be attached to the cabinet by inserting the shoulder bolt through the metal bracket, plastic spacer, and then into the threaded insert in the cabinet side.



Backsplash Installation

Attach Backsplash flush on each end of cabinet by inserting provided screws through mending plate into back of cabinet.



Finish Schedule

Face Color -
Top Color -
Toe Color -
Pulls -
Interior -
Other (Specify) -

Installation Notes:

1. All hardware needed for assembly is included.
2. Large items are preassembled at the factory to ensure proper alignment. Items are then disassembled into manageable sections for shipping purposes and ease of reassembly.
3. Shipping cleats need to be removed before installation. These cleats are installed to prevent damage.

collins

Collins Manufacturing
809 E 20th Street
Cookeville TN 38501

Title: **GSE Deluxe 39Hi Wet Station**

Size: # **5515-48**

Drawn By:

Date:

Sheet #: